

# Kawasaki Robot

## Clean Robot NTS, TTS series



### List of standard and options

		NTS10	NTS20	TTS10	TTS20
Robot arm	Robot: single arm	●*2	–	●*2	–
	Robot: double arm	–	●*2	–	●*2
	Z-stroke (470mm)	●	●	–	–
	Z-stroke (740mm)	–	–	●	●
	Hand specification*1	○	○	○	○
	Edge gripper	○	○	○	○
	Vacuum	○	○	○	○
	Mapping sensor	○	○	○	○
Aligner	Aligner	○	○	○	○
Controller	D60 controller	●	●	●	●
	Jig for programming	○*3	○*3	○*3	○*3
	Teach pendant	○*3	○*3	○*3	○*3
	Robot harness (1, 2, 2.5, 3, 3.5, 4, 4.5, 5 meters)	●*4	●*4	●*4	●*4
Software	Standard software for operation	●	●	●	●
	KMTerm	●	●	●	●
	KSUtility Lite	●	●	●	●
	KRET	○	○	○	○
	KR3D	○	○	○	○
	KSUtility	○	○	○	○
Manual	Operation manual	●	●	●	●
	Communication command manual	●	●	●	●
	Introduction procedure for Integrated package software (K-Fast)	●	●	●	●
Training	Programing, maintenance, troubleshooting	○	○	○	○

●: Standard ○: Option –: Not Selectable  
\*1: The standard robot arm does not include a hand.  
\*2: Either the edge grip or vacuum hand can be used.  
\*3: When selecting a teach pendant, an operation box is also needed.  
\*4: Select a robot harness with the length between 1 and 5 meters.  
Contact Kawasaki representatives in your region.

**Kawasaki Heavy Industries, Ltd.**  
**Robot Business Division**

**Tokyo Head Office/Robot Division**  
1-14-5, Kaigan, Minato-ku, Tokyo 105-8315, Japan  
Phone: +81-3-3435-2501 Fax: +81-3-3437-9880

**Akashi Works/Robot Division**  
1-1, Kawasaki-cho, Akashi, Hyogo 673-8666, Japan  
Phone: +81-78-921-2946 Fax: +81-78-923-6548

**Global Network**  
**Kawasaki Robotics (USA), Inc.**  
28140 Lakeview Drive, Wixom, MI 48393, U.S.A.  
Phone: +1-248-446-4100 Fax: +1-248-446-4200

**Kawasaki Robotics (UK) Ltd.**  
Unit 4 Easter Court, Europa Boulevard, Westbrook Warrington  
Cheshire, WA5 7ZB, United Kingdom  
Phone: +44-1925-71-3000 Fax: +44-1925-71-3001

**Kawasaki Robotics GmbH**  
Im Taubental 32, 41468 Neuss, Germany  
Phone: +49-2131-34260 Fax: +49-2131-3426-22

**Kawasaki Robotics Korea, Ltd.**  
43, Namdong-daero 215beon-gil, Namdong-gu, Incheon, 21633, Korea  
Phone: +82-32-821-6941 Fax: +82-32-821-6947

**Kawasaki Robotics (Tianjin) Co., Ltd.**  
1:2/F, Building 6, No.19 Xinhuan Road, TEDA, China  
Phone: +86-22-5983-1888 Fax: +86-22-5983-1889

**Kawasaki Motors Enterprise (Thailand) Co., Ltd.**  
(Rayong Robot Center)  
119/10 Moo 4 T.Pluak Daeng, A.Pluak Daeng, Rayong 21140 Thailand  
Phone: +66-38-955-040-58 Fax: +66-38-955-145

<https://robotics.kawasaki.com/>

\* Materials and specifications are subject to change without notice.

## Kawasaki Robot



### CAUTIONS TO BE TAKEN TO ENSURE SAFETY

- For those persons involved with the operation / service of your system, including Kawasaki Robot, they must strictly observe all safety regulations at all times. They should carefully read the Manuals and other related safety documents.
- Products described in this catalogue are general industrial robots. Therefore, if a customer wishes to use the Robot for special purposes, which might endanger operators or if the Robot has any problems, please contact us. We will be pleased to help you.
- Be careful as Photographs illustrated in this catalogue are frequently taken after removing safety fences and other safety devices stipulated in the safety regulations from the Robot operation system.



ISO certified in Akashi Works.

# Horizontally Articulated Arm

## NTS series

### Features:

- A single robot can access 2 and 3 FOUPs of EFEM without a track.
- Smooth operation. The specially designed drive system enables the robot to move incredibly smoothly and deliver high precision.
- Compliant with SEMI-F47 standard.
- Compliant with SEMI-S2 standard. Consideration must be given to the environment and personal safety.

### Specifications

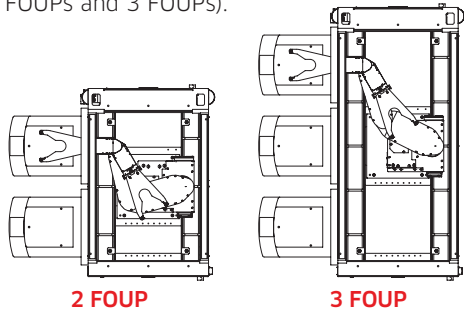
Model		NTS10	NTS20
Structure		Horizontal articulated type	
Degree of freedom (axes)		4	5
Motion range	θ1 axis (rotation JT2) (°)	340	
	Z axis (up-down JT3) (mm)	470	
	θ2 axis (rotation JT4) (°)	340	
	H1 axis (rotation JT6) (°)	340	
	H2 axis (rotation JT7) (°)	-	340
Maximum reach (mm)		1,066	
Repeatability (mm)		±0.1 (Wafer Center)	
Cleanliness*1		ISO Class 1	

\*1: Measured in our clean booth



### Layout Example

The NTS and TTS series can be used for 2 to 3 FOUPs of EFEM without a track. (The same arm can be used for 2 FOUPs and 3 FOUPs).



# Horizontally Articulated Arm

## TTS series

### Features:

- All the features of the NTS series have been carried over to the TTS series, including the ability to access up to 3 FOUPs.
- Kawasaki's unique and highly rigid telescopic mechanism delivers high-speed handling in high and low positions.
- Compliant with SEMI-F47 standard.
- Compliant with SEMI-S2 standard. Sufficient consideration given to the environment and personal safety.

### Specifications

Model		TTS10	TTS20
Structure		Telescopic horizontal articulated type	
Degree of freedom (axes)		4	5
Motion range	θ1 axis (rotation JT2) (°)	340	
	Z axis (up-down JT3) (mm)	740	
	θ2 axis (rotation JT4) (°)	340	
	H1 axis (rotation JT6) (°)	340	
	H2 axis (rotation JT7) (°)	-	340
Maximum reach (mm)		1,066	
Repeatability (mm)		±0.1 (Wafer Center)	
Cleanliness*1		ISO Class 1	

\*1: Measured in our clean booth



## Software

### Standard software

The standard software best suits robot operations for wafer handling and allows monitoring of operating conditions.

#### KMTerm

By connecting with the robot controller, KMTerm allows parameter setting, information display and data backup.

#### KSUtility Lite

Enables the robot to be operated from the host PC.

### Optional Software

Optional software allows the user to perform layout studies and simulation for tact time on their own PC.

#### KRET

Designing of layout inside the equipment and operational paths can be done with ease.

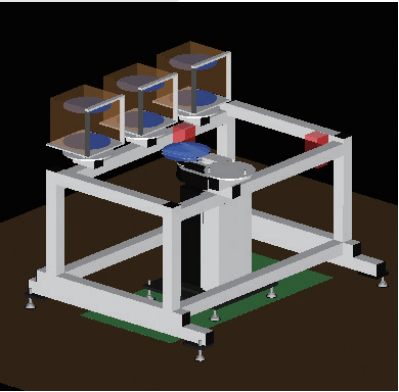
#### KSUtility

Enables the robot to be operated from the host PC.

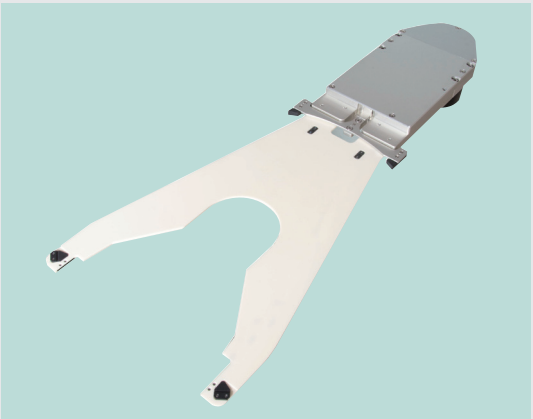
#### KR3D

Robot operations can be performed off-line with ease.

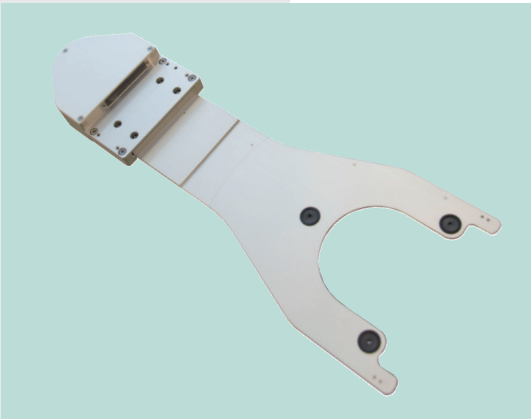
\*For details of the software, see relevant manuals.



## Hand (Option)



Edge gripper hand



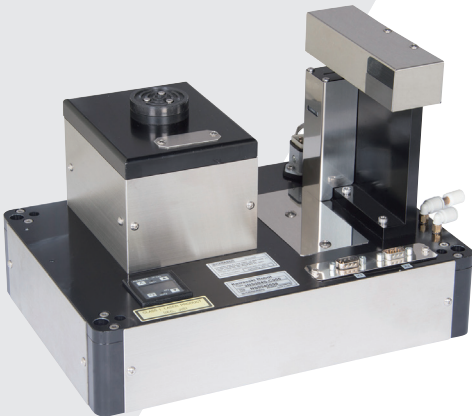
Vacuum hand

\*For details of the software, see relevant manuals.

## Aligner (Option)

### Features:

- High-speed alignment (2.5 seconds).



\*For details of the software, see relevant manuals.

## Controller

### Features:

- Compact package. Compliant with SEMI-F47 standard.
- Ethernet communication port installed as standard enables high-speed communications.
- Allows flexible processing of various kinds of software.



D60 Controller

\*For detail specifications, contact Kawasaki representatives in your region.