

SPECIFICATION OF ROBOT

KF262JFE25
KF262JGE25
KF262JTE25
KF262JVE25
KF262CFE25
KF262CGE25
KF262CTE25
KF262CVE25

1st Edition : Apr.22.2010

KAWASAKI HEAVY INDUSTRIES LTD.
ROBOT DIV.

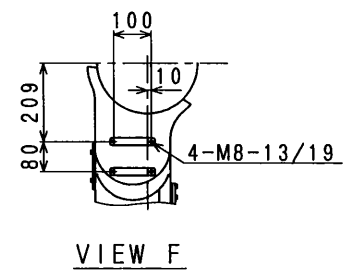
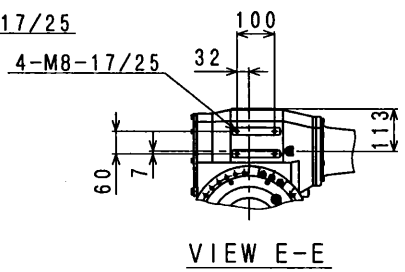
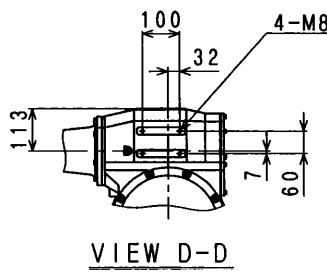
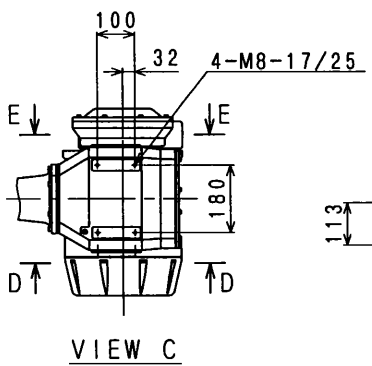
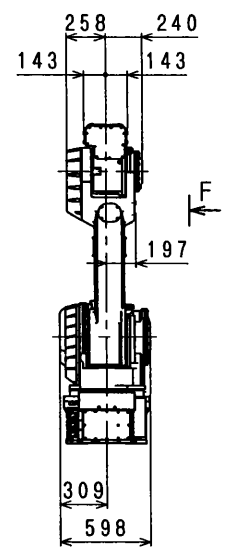
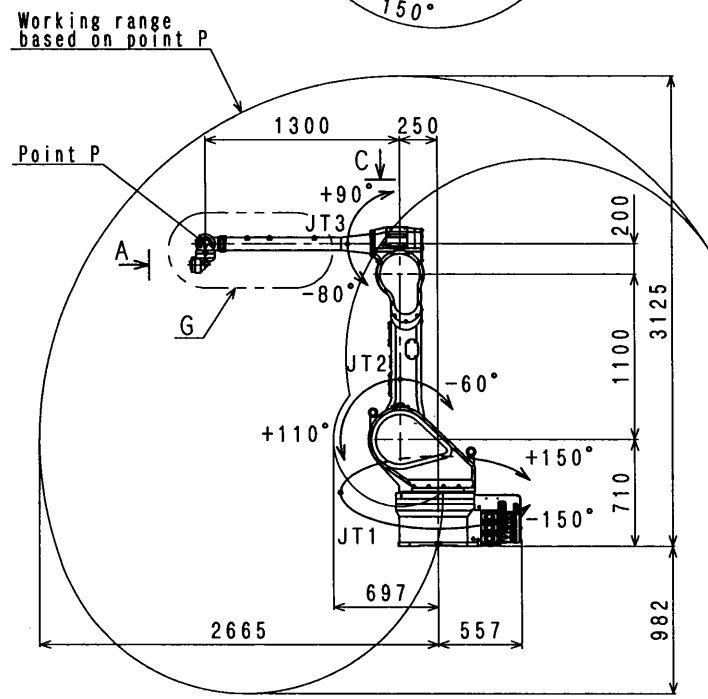
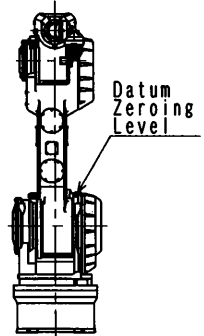
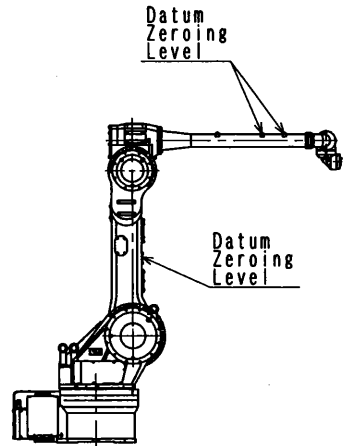
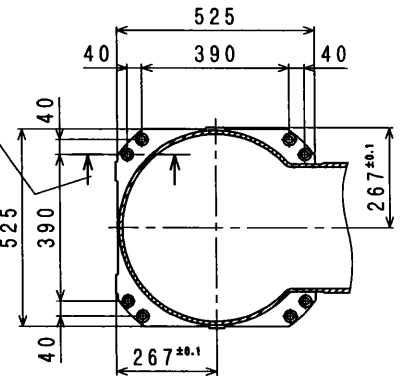
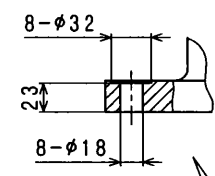
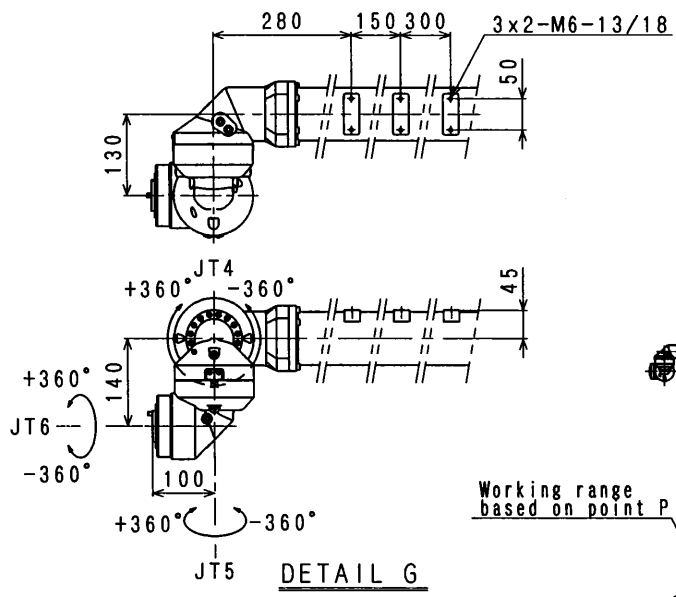
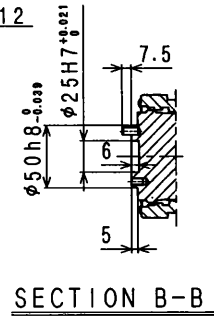
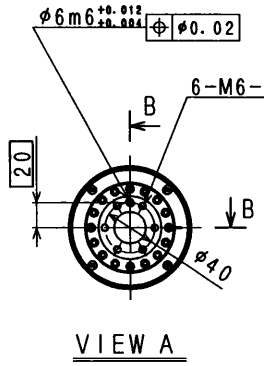
Doc, No: 90101-1816DEA

1. Specification of Robot

[1] Robot Arm

| | | | |
|--|--|-----------------------------|--------------------------------|
| 1. Model | KF262J-C001, KF262C-C001 | | |
| 2. Type | Articulated robot | | |
| 3. Degree of freedom | 6 axes | | |
| 4. Axis specification | Operating axis | Max. operating range | |
| | Arm rotation (JT1) | $\pm 150^\circ$ | |
| | Arm out-in (JT2) | $+110^\circ \sim -60^\circ$ | |
| | Arm up-down (JT3) | $+90^\circ \sim -80^\circ$ | |
| | Wrist roll (JT4) | $\pm 360^\circ$ | |
| | Wrist roll (JT5) | $\pm 360^\circ$ | |
| Wrist roll (JT6) | $\pm 360^\circ$ | | |
| 5. Repeatability | ± 0.5 mm (at the tool mounting surface) | | |
| 6. Playback Accuracy | ± 1.0 mm (at the tool mounting surface) | | |
| 7. Max. payload | Wrist : 12 kg (at the tool mounting surface) Upper arm : 20 kg (on the Upper Arm) | | |
| 8. Max. painting speed | 1200 mm/s (at the center of tool mounting surface) | | |
| 9. Max. linear interpolation speed | 2000 mm/s | | |
| 10. Load capacity of wrist | | | |
| | | Max. torque | Moment of inertia [*] |
| | JT4 | 33.3 N·m | 1.20 kg·m ² |
| | JT5 | 28.8 N·m | 0.90 kg·m ² |
| JT6 | 7.9 N·m | 0.11 kg·m ² | |
| <p>Note[*] Each value in this table shows allowable payload moment of inertia of JT4/JT5/JT6 when max. allowed torque is applied to each axis. If more detailed data is required for your application, please contact Kawasaki.</p> | | | |
| 11. Driving motor | Brushless AC Servomotor | | |
| 12. Working range | See attached drawing | | |
| 13. Mass | 720 kg (without options) | | |
| 14. Color | Munsell 10GY9/1 equivalent | | |
| 15. Installation | Floor and Wall mounting | | |
| 16. Environment cond. | (Temperature) 0 ~ 40 °C, (Humidity) 35 ~ 85 %, no dew, nor frost allowed | | |
| 17. Explosion proof | Pressurized and intrinsically safe | | |
| 18. Air supply to the manipulator | Clean & dry air : 0.5 Nm ³ /min, 0.4~0.7 MPa | | |
| | Dew point : -17 °C or less at atmospheric pressure. | | |
| | Solid material : 0.01 μm or less | | |
| | Oil content : Mist separation 99.9999% or more | | |
| 19. Options | Manipulator cover | | |
| | Adjustable Mechanical Stopper : JT1/JT2/JT3 | | |
| | Jig set for Zeroing | | |
| | | | |
| | | | |
| 20. Others | Consult Kawasaki about maintenance parts and spare parts. | | |

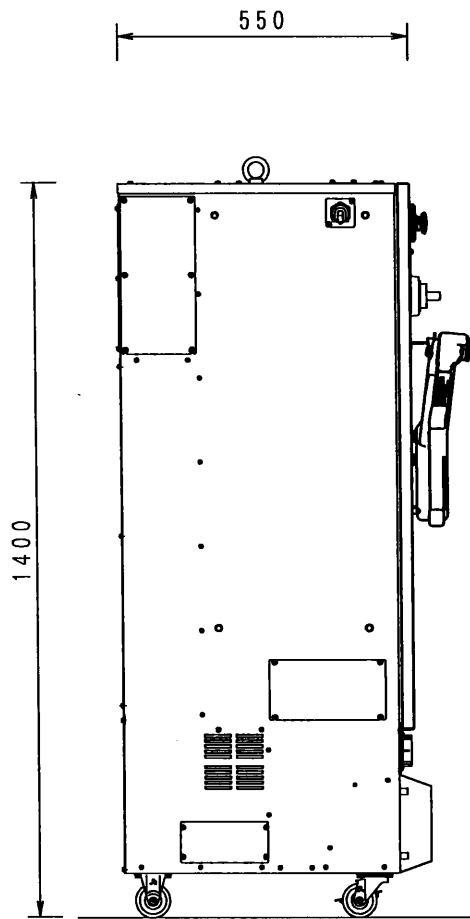
| [2] Controller | | |
|-----------------------------------|--|--|
| 1. Model | E25/E27 | |
| 2. Construction | Self-supported type | |
| 3. Dimensions | See attached drawing | |
| 4. Number of controlled axes | 6 axes 7/8/9 axes(built-in addition, option) | |
| 5. Servo control and drive system | Full Digital Servo System | |
| 6. Type of control | Teach mode | Joint, Base, Tool, Fixed Tool (option) operation mode |
| | Repeat mode | PTP, CP control mode Joint, Linear, Circular (option) interpolation |
| 7. Teaching method | Teaching or AS language programming | |
| 8. Memory capacity | 8 MB | |
| 9. External operation signals | External Motor Power Off, External Hold, etc. | |
| 10. General purpose signals | Input signals | 32 channels (Includes dedicated signals) |
| | Output signals | 32 channels (Includes dedicated signals) |
| 11. Operation panel | Basic Operation Switches (Teach/Repeat SW, Emergency Stop SW, Control power lamp) | |
| 12. Cable length | Power/Signal cable in non hazardous area | 3 m |
| | Power/Signal cable in hazardous area | 3 m |
| | Teach Pendant cable | 10 m |
| 13. Mass | See attached drawing | |
| 14. Power requirement | AC200 V - AC220 V±10%, 50/60 Hz, 3 phases, Max 5.6 kVA(E27), Max 10 kVA(E25) | |
| 15. Ground | Less than 10 Ω (for Explosion proof) ,Less than 100 Ω (robot dedicated ground) Leakage current: max. 100 mA | |
| 16. Ambient temperature | 0 - 45 °C | |
| 17. Relative humidity | 35 - 85 % (non-condensation) | |
| 18. Color | Munsell: 10GY9/1 equivalent | |
| 19. Teach Pendant | Intrinsically safe construction, Color display (7.2 inch LCD) with touch panel Emergency Stop,Teach Lock and Deadman Switches | |
| 20. Options | | |
| General purpose signals | Input signals | 64/96/128 channels (Includes dedicated signals) |
| | Output signals | 64/96/128 channels (Includes dedicated signals) |
| I/O connector | D-SUB 37pin(male,female) with cover | |
| Operation panel | Motor Power ON, Cycle start, RUN/HOLD, Error reset, Error lamp | |
| Power/Signal cable | in non hazardous area 5,7,10,15,20,25,30m | } Total length: max. 40 m |
| | in hazardous area 1,5,7,10,15m | |
| Teach Pendant cable | 5m, 15m, 20m, 25m | } Total length: max. 50 m |
| Teach pendant Connector Box | in non hazardous area 3,5,7,10,15,20,25,30m in hazardous area 1,3,5,7,10,15,20,25,30m | |
| Auxiliary storage | USB memory | |
| Brake release | Brake release switch | |
| AC Outlet | AC100V Outlet | |
| PC cable | 1.5 m, 3 m | |
| Teach Pendant option | Cable hook, connector for TP less | |
| Others | Cooler, LED Light, Field BUS, Software PLC, Analog input/output, Conveyor Synchronization, Paint Equipment Control and so on | |
| 21. Others | Consult Kawasaki about maintenance parts and spare parts. | |



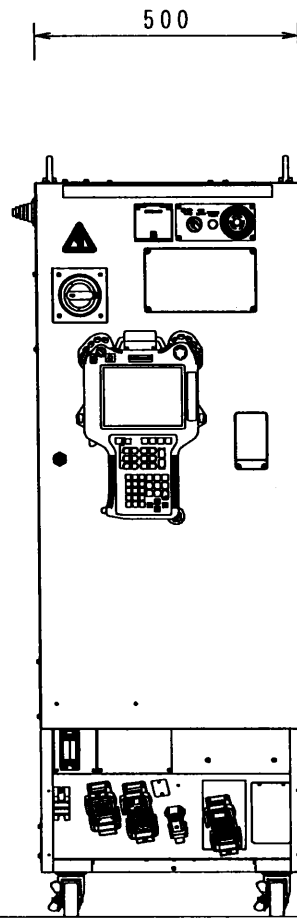
KF262
WORKING RANGE

E25 CONTROLLER

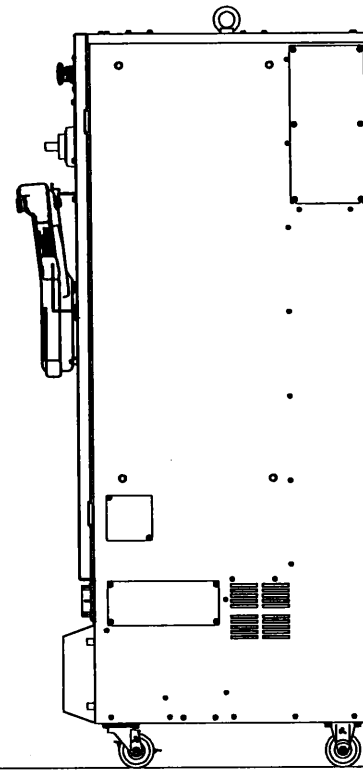
MASS: 120Kg



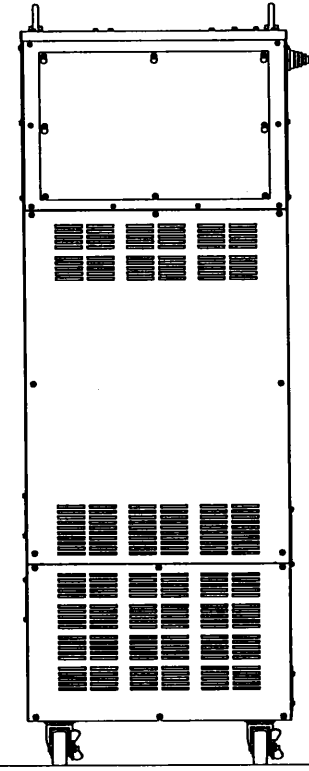
SIDE VIEW



FRONT VIEW



SIDE VIEW



REAR VIEW